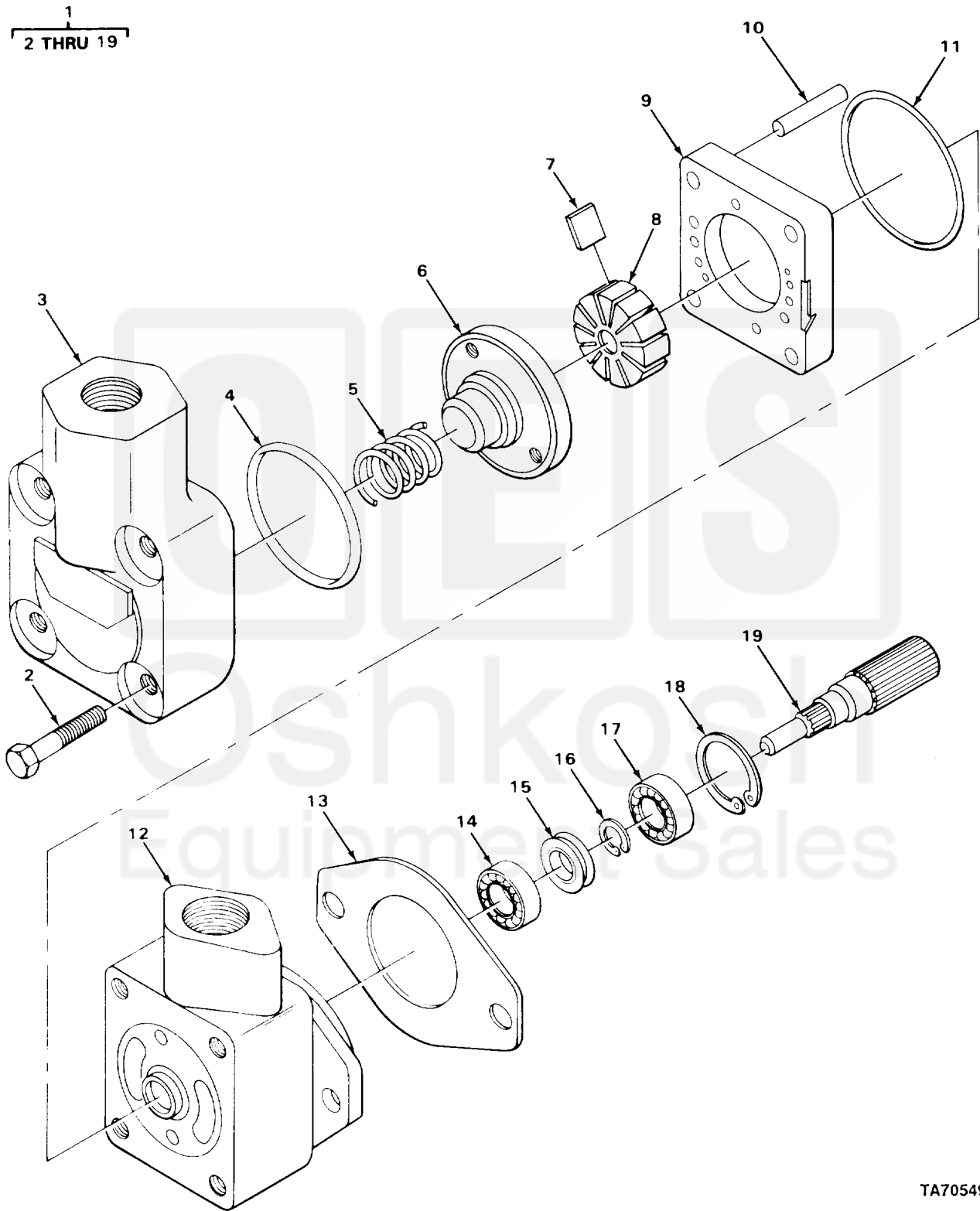


SECTION II

TM 10-3930-242-24P



TA705498

FIGURE 172. ENGINE DRIVEN HYDRAULIC PUMP.

Current part is item (1) on diagram. Available at www.oshkoshequipment.com

ITEM NO	SMR CODE	CAGEC	PART NUMBER	DESCRIPTION AND USABLE ON CODES (UOC)	QTY
GROUP 2401 PUMP AND MOTOR					
FIG. 172 ENGINE DRIVEN HYDRAULIC PUMP					
1	PAFFF	62983	V10-1S4S11D20	PUMP,ROTARY ENGINE DRIVEN	1
2	PFZZ	62983	1278	.SCREW,MACHINE	4
3	XDFZZ	62983	372865	.COVER,PUMP HYDRAULI	1
4	KFFZZ	62983	199822	.PACKING,PREFORMED PART OF KIT P/N 923548 PART OF KIT P/N 923469	1
5	PAFZZ	62983	345262	.SPRING,PRESSURE	1
6	PFZZ	32705	374343	.VALVE PLATE,HYDRAUL	1
7	KFFZZ	62983	923500	.VANE KIT PART OF KIT P/N 923469	1
8	KFFZZ	62983	351247	.ROTOR PART OF KIT P/N 923469	1
9	KFFZZ	63977	317677	.RING PART OF KIT P/N 923469	1
10	XAFZZ	63977	39640	.PIN,SPRING	2
11	KFFZZ	32705	199823	.PACKING,PREFORMED PART OF KIT P/N 923548 PART OF KIT P/N 923469	1
12	XBZZ	63977	317668	.BODY,PUMP	1
13	PAFZZ	03677	LT1-1041	.GASKET	1
14	PAFZZ	38443	201SQ5A7	.BEARING,BALL,ANNULA	1
15	PFZZ	62983	263585	.SEAL,PLAIN ENCASED PART OF KIT P/N 923548	1
16	PAFZZ	62983	106641	.RING RETAINING SHAFT	1
17	PAFZZ	62983	148423	.BEARING,BALL,ANNULA SHAFT	1
18	PFZZ	96906	MS16625-1156	.RING,RETAINING BEARING	1
19	XDFZZ	62983	374339	.SHAFT, SHOULDERED SPLINED	1

END OF FIGURE



Current part is item (1) on diagram. Available at www.oshkoshequipment.com